

Work Space Pricing

Contact Us

Starting at \$350/ month + HST

50 sq. ft open community work spaces

Starting from \$500 – 600/ month + HST

100 sq. ft enclosed work spaces

Starting at \$1000/ month + HST

300 sq. ft enclosed work spaces

Starting at \$1200/ month + HST

350 sq. ft enclosed work spaces

Common Areas

Wendy Smith

Business Development

incubator@nationalrdinc.ca

72-111 Farquhar Street,

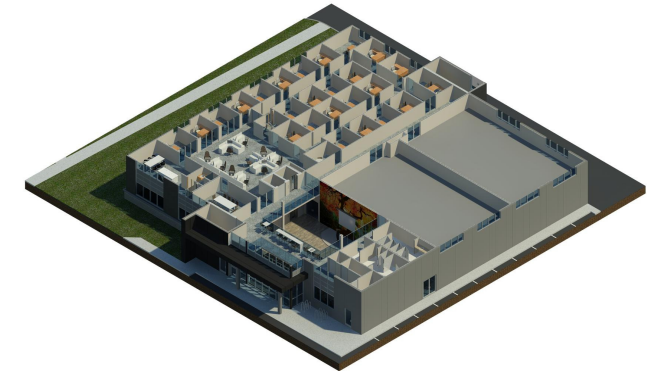
Guelph, Ontario N1H 3N4

Cell: (519) 249-9103



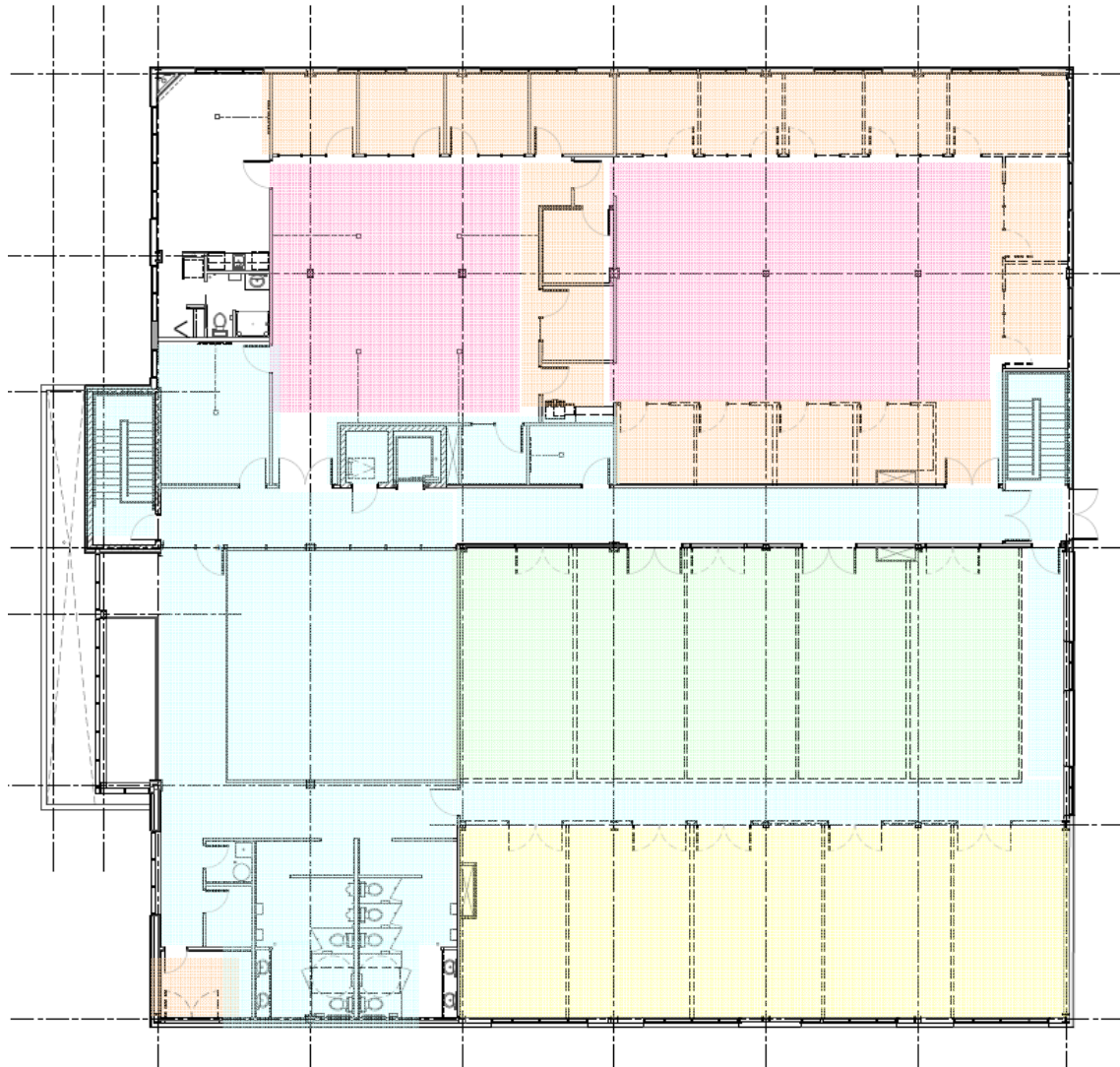
NATIONAL
ENTREPRENEURS

Supporting Your Business



Professional Spaces for Lease
Boxwood Business Campus

Opening Late Fall of 2018



Resources to Get Started

Our new facility is centrally located both for small businesses and emerging start-ups to target advancements in developing manufacturing or IT products and processes in the heart of Cambridge's, industrial sector. Our community will attract seasoned trades experts as well as new graduates from various Colleges and Universities to start their businesses. We offer a wide range of support to your business that includes:

- A comprehensive package to meet all operating and administrative needs for new businesses
- Affordable open or enclosed work spaces
- Conference rooms, private meeting rooms, and town hall event space
- A virtual or physical address for your new business
- Ample parking spaces available
- All standard enmities for a work space environment (ie. Tea & coffee service)
- And much more!



A Home for your Business

Be part of the growing Entrepreneurs Hub program. Our Hub is located near Maple Grove and Boxwood Drive just minutes away from the Toyota plant. Also, the close proximity to HWY 401 offers business owners immediate access to all major arteries of the Tri-City. Our head office offers a beautiful state of the art town-hall with the capacity of over 100 attendees, 3 community boardrooms, and over 70+ parking spaces. By joining our community, you will have access to:

- Open or enclosed work spaces ranging from 50 to 350 sq. ft
- Ethernet and wifi internet
- Access to setup office IP phone systems
- Access to recreational facility (coming soon)
- Booking of community boardrooms
- Booking of town-hall event space
- Kitchenette with coffee services
- Access to parking



Membership Pricing

Employees	Basic		Deluxe		Premium	
	Member Fee	Fee with HST	Member Fee	Fee with HST	Member Fee	Fee with HST
1 to 5	\$ 175	\$ 198	\$ 394	\$ 445	\$ 1,594	\$ 1,801
6 to 10	\$ 229	\$ 259	\$ 515	\$ 582	\$ 2,015	\$ 2,277
11 to 25	\$ 319	\$ 360	\$ 718	\$ 811	\$ 2,718	\$ 3,071
26 to 50	\$ 439	\$ 496	\$ 988	\$ 1,116	\$ 3,488	\$ 3,941
51+	\$ 595	\$ 672	\$ 1,339	\$ 1,513	\$ 4,839	\$ 5,468

Membership Benefits

Administrative Support Membership Benefits	Discounts		
	Basic	Deluxe*	Premium*
Business Advice			
Advice on incorporation & timing	✓	✓	✓
Discounts to incorporate companies	5%	10%	10%
Mentorship Program			✓
Accounting & Tax Services			
Year round discount on bookkeeping services	5%	10%	15%
Corporate T2 tax submissions	5%	7.5%	10%
Personal T1 tax submissions	✓	15%	25%
Discount on SR&ED claim preparation		5%	5%
Available Resources			
Professional mailing address & suite #	✓	✓	✓
Access to setup phone system for home office	✓	✓	✓
Access to boardrooms	✓	✓	✓
Discount on state-of-the art conference room		10%	15%
Printing access for black and white 8.5" x 11"	\$0.11	\$ 0.07	\$ 0.05
Printing access for colour 8.5" x 11"	\$0.45	\$ 0.35	\$ 0.30
Access to fax machine	✓	✓	✓
Guest wifi	✓	✓	✓
Kitchenette with guest coffee service	✓	✓	✓
Office Space			
Annual discount on 1st month's rent of a 12 month lease		25%	50%
Ethernet internet		✓	✓
Discount on use of office IP phone system		✓	50%
Access to recreational facility (coming soon)		✓	✓
Kitchenette with employee coffee service		✓	✓
Access to dedicated facility parking spaces		✓	✓
Other Services			
Discount on website development services	5%	10%	15%
Discount on logo development	5%	10%	15%
Discount on printing services (signage, business cards)	✓	✓	✓
Access to IT administration services	✓	✓	✓
Access to individual & group health benefits	✓	✓	✓
Access to insurance resources (tenant, liability, etc.)	✓	✓	✓
Access to small business banking resources	✓	✓	✓
Access to HR consulting services	✓	✓	✓
Access to pre-paid legal shield services	✓	✓	✓

* Office space benefits subject to approval for deluxe & premium memberships